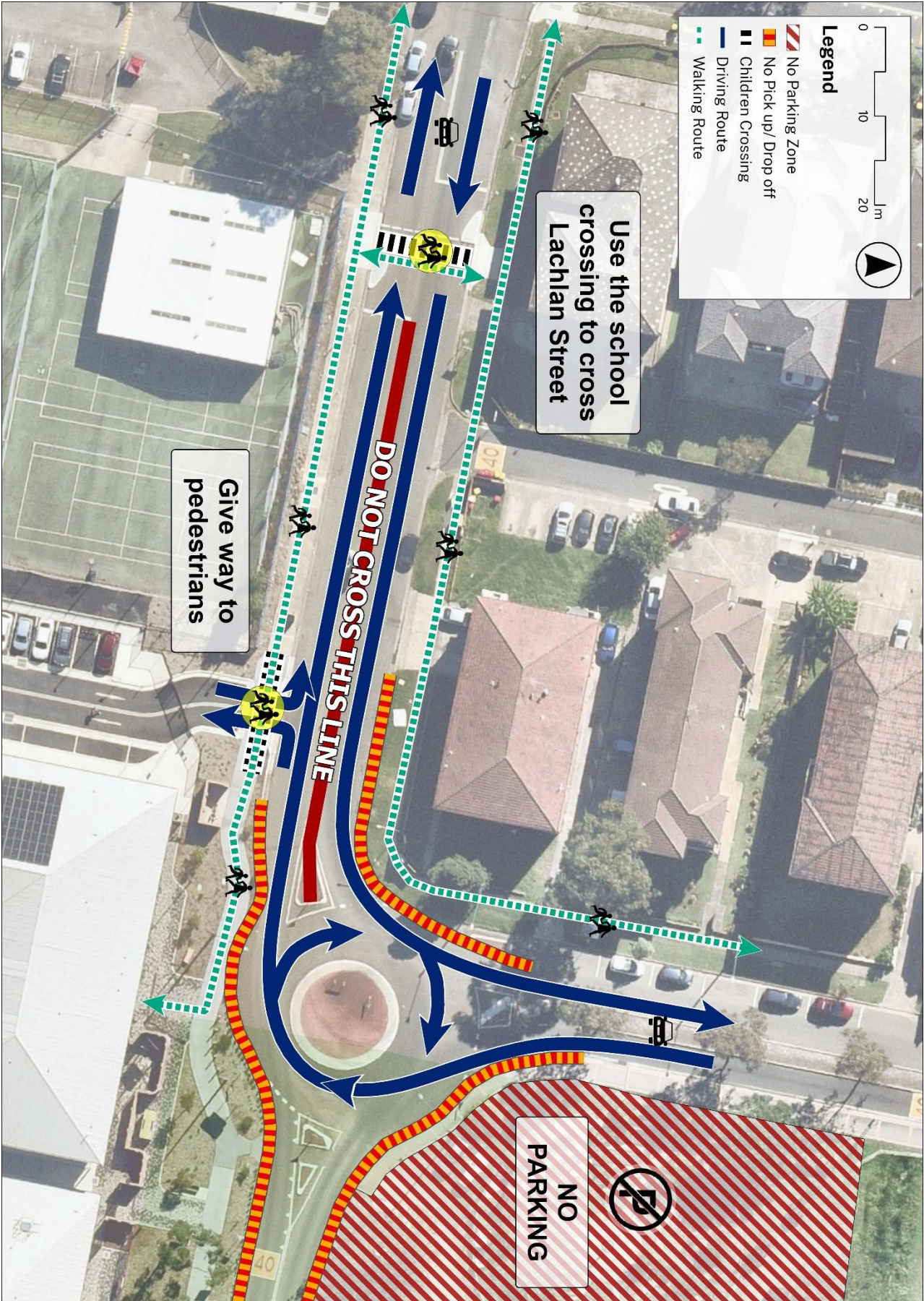


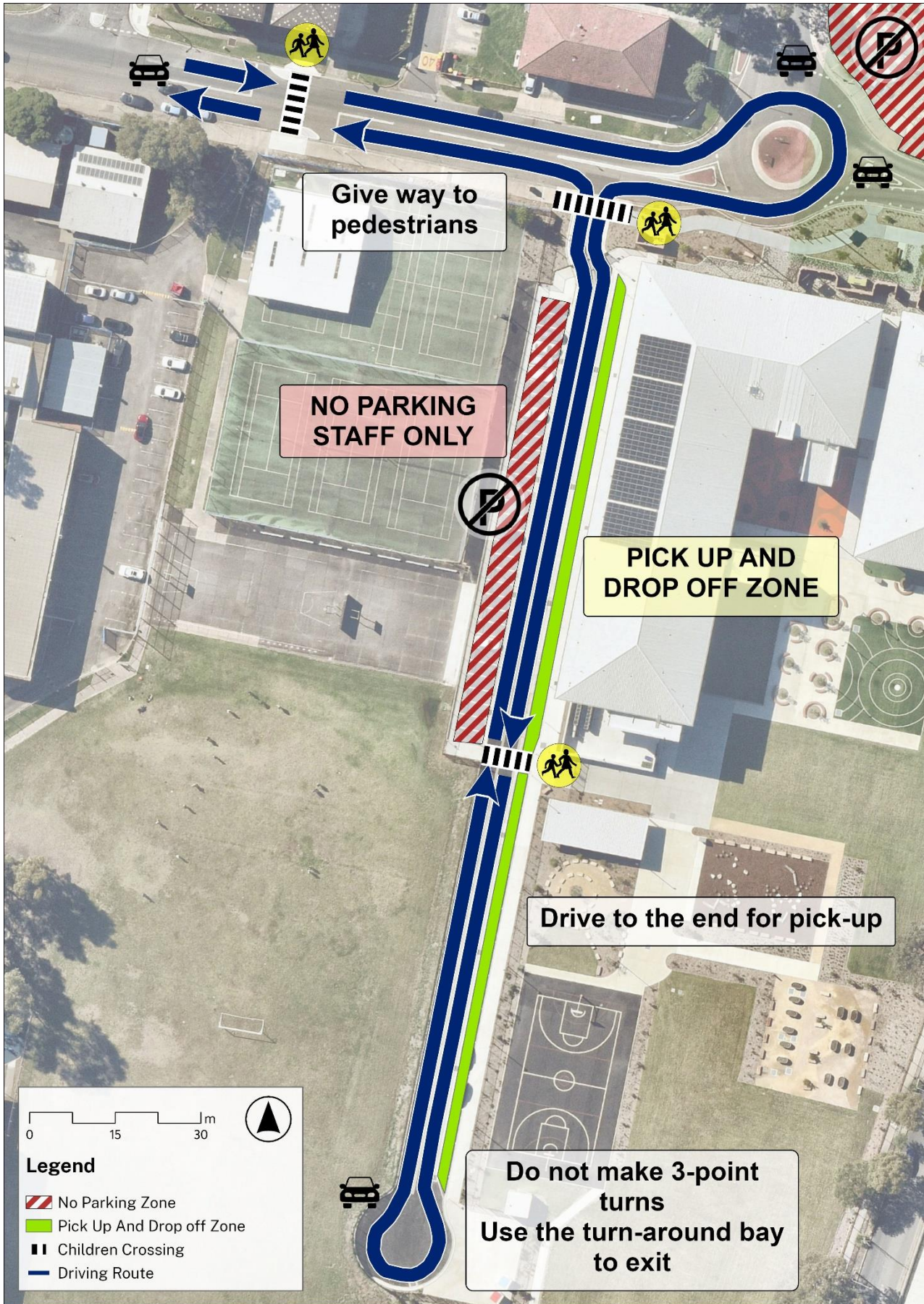
Lachlan Street – Road Safety



For more information contact:

School Infrastructure NSW
Email: schoolinfrastructure@det.nsw.edu.au
Phone: 1300 482 651
www.schoolinfrastructure.nsw.gov.au

Driveway – Safety



For more information contact:

School Infrastructure NSW
Email: schoolinfrastructure@det.nsw.edu.au
Phone: 1300 482 651
www.schoolinfrastructure.nsw.gov.au

Road safety



Keeping your children safe when dropping off and picking up at school

Here are a few things you can do to help keep your children and others safer during drop-off and pick-up times during the school week:

- Make sure your children are fastened in the correct child car seat for their age and size and that it is fitted correctly.
- Stick to the 40km/h speed limit in a school zone and look out for children who may be about.
- Watch for flashing lights on buses. They let you know that there may be children crossing or about to cross the road. A 40km/h limit applies when school bus lights flash.
- Always give way to pedestrians particularly when entering and leaving driveways.
- Always park and turn legally around schools. Manoeuvres such as U-turns and three-point turns are dangerous during busy school drop-off and pick-up times.
- Drop your children off and pick them up on the school side of the road in your school's designated drop-off and pick-up area. Never call out to them from across the road – they may run to you without checking for traffic.
- It's safest for children to get out of the car through the Safety Door, away from passing traffic. This is the rear footpath side door of the car.

For more information on keeping our kids safe around schools visit the **families** section on [safetytown.com.au](https://www.safetytown.com.au)



Too many lives lost on NSW roads.
Our goal is zero.

For more information contact:

School Infrastructure NSW
Email: schoolinfrastructure@det.nsw.edu.au
Phone: 1300 482 651
www.schoolinfrastructure.nsw.gov.au



SCHOOL ZONE OFFENCES

WHAT ARE YOU RISKING?*

FACT

Children are small, harder to see, behave unpredictably and are extremely vulnerable. They need **YOU** to take extra care when driving and parking around school zones.



No Parking (KISS & RIDE)

You have 2 minutes to drop-off or pick-up and must stay within 3 metres of your vehicle.



Pedestrian Crossings

Do not stop or park on or near a marked crossing.



No Stopping

You are not permitted to stop on a length of road with a no stopping sign.



Driveways

Do not stop on or across a driveway.



Bus Zone

You must not stop your vehicle in a Bus Zone unless you are driving a public bus.



Intersections

Do not stop within 10 metres of an intersection.



Mobile Phone Use

Do not use a hand held mobile phone while driving.

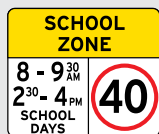


Parallel Parking

Do not park too close to double barrier or dividing centre line.



School Zone Speeding Offences



40km/h is the speed limit. Children are vulnerable in school zones.



Double Parking

Do not double park in a school zone.



Footpath and Nature Strip

Do not stop on a footpath, nature strip or obstruct ramp or path access.



LIVERPOOL CITY COUNCIL

*Fines current as of October 2023. Fines and demerit points are subject to change.

For more information contact:

School Infrastructure NSW
 Email: schoolinfrastructure@det.nsw.edu.au
 Phone: 1300 482 651
www.schoolinfrastructure.nsw.gov.au

